





Appendix B – Grid square maps

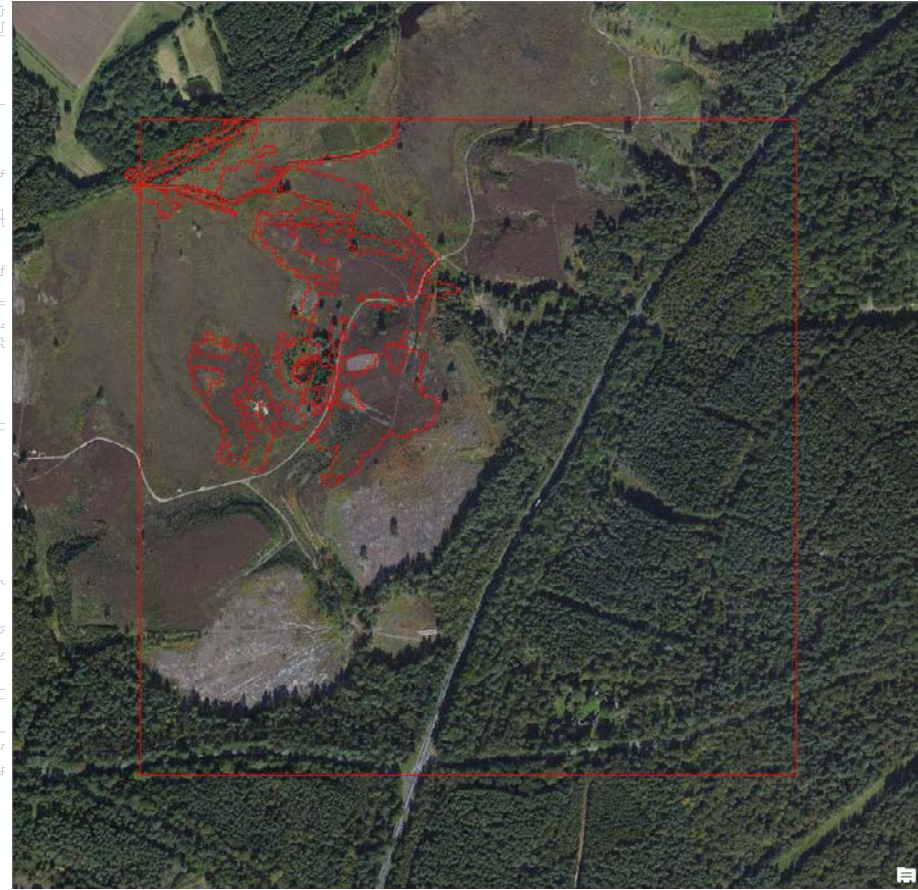
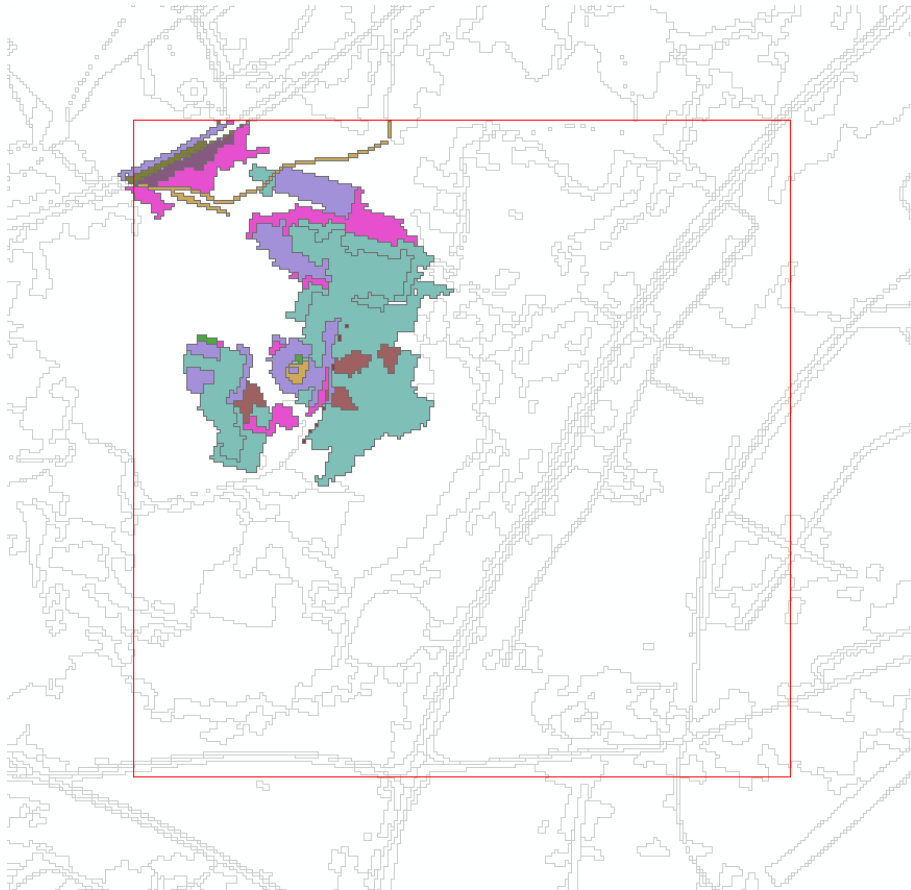
A series of maps showing the parcels that would be covered for particular 500-m grid squares. For each square the map on the left shows the selected parcels (colour shading), unselected parcels (grey outlines). The 1-km square boundary is shown for reference. The map on the right shows the selected parcels (red outline) overlaid on an aerial image. Selected parcels are those whose centroid fell within the 500-m square. Note that some parcels can have a large area within multiple squares but will only need to be validated in one square. The colour scheme used for shading is shown below.

 Arable	 Gardens
 Bare Ground	 Hedgerow or Field Margin
 Beach	 Humid dune slacks
 Bracken	 Improved (scrub)
 Coastal Dune Heathland	 Improved Grassland
 Coastal Saltmarsh (established)	 Lowland Heathland
 Coastal Saltmarsh (pioneer)	 Lowland Heathland (Scattered)
 Coastal Sand Dunes	 Lowland Mixed Deciduous Woodland
 Coastal Sand Dunes (scrub)	 Maritime Cliff and Slopes
 Coastal Sediment	 Orchard
 Coastal and Floodplain Grazing Marsh (Coastal)	 Scrub
 Coastal and Floodplain Grazing Marsh (high productivity)	 Semi-improved (poor condition)
 Coastal and Floodplain Grazing Marsh (low productivity)	 Semi-improved (scrub)
 Coastal and Floodplain Grazing Marsh (medium productivity)	 Semi-improved grassland
 Coniferous Plantation	 Semi-improved grassland (wet)
 Dune Grassland	 Urban
 Felled Woodland	 Waterbodies
 Fen, Marsh and Swamp	 Woodland Rides

TL6727NW – Dersingham Bog

Broad habitats = Heathland, bracken, scrub, fen, woodland rides, woodland, waterbodies

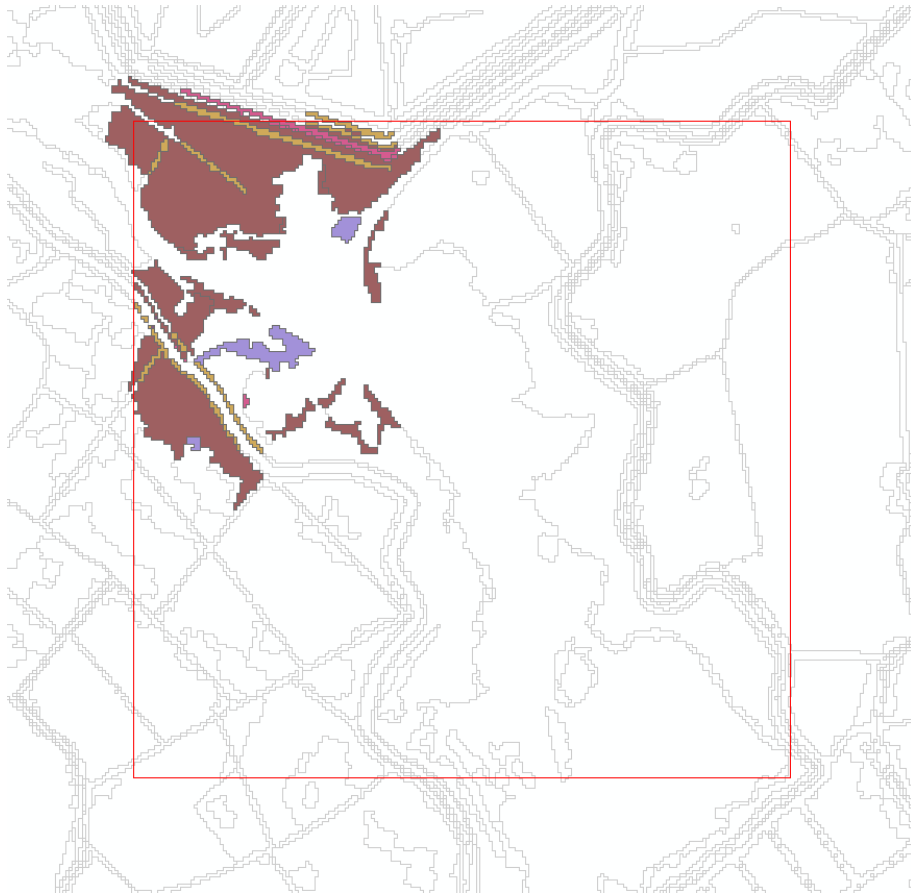
Number of parcels = 94



TG4320NW – Heigham Sound

Broad habitats = Wetland and marginal habitats

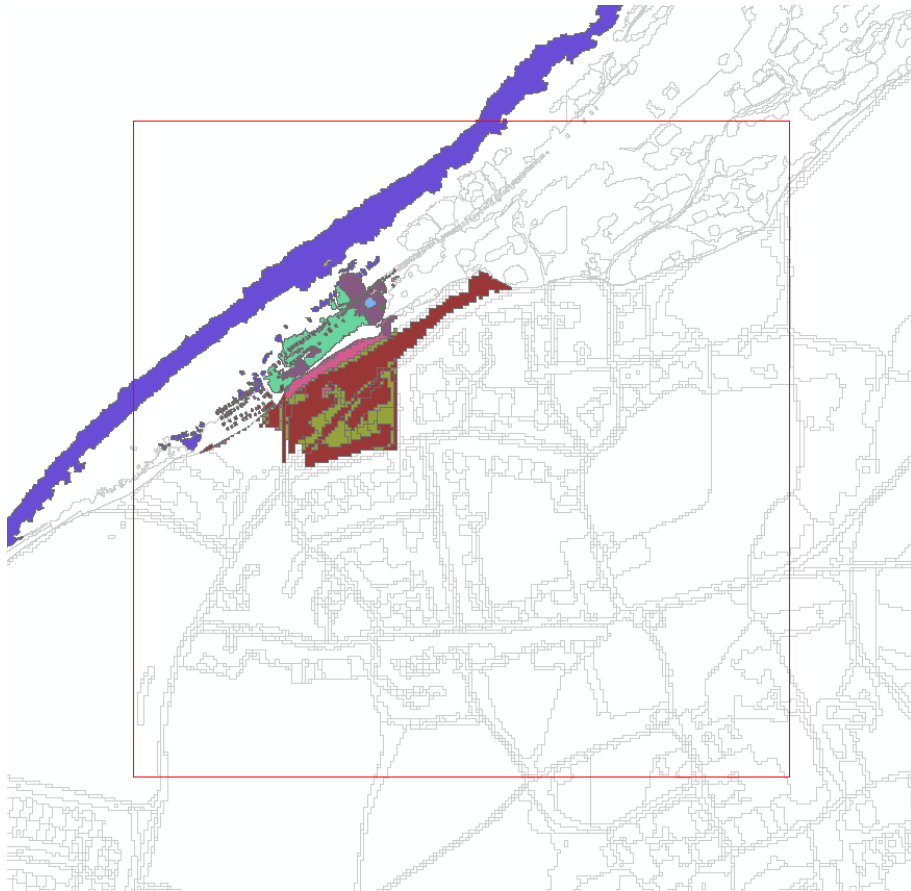
Number of parcels = 99



TF6842NW – Old Hunstanton

Broad habitats = Beach, cliff, town, roads, grassland

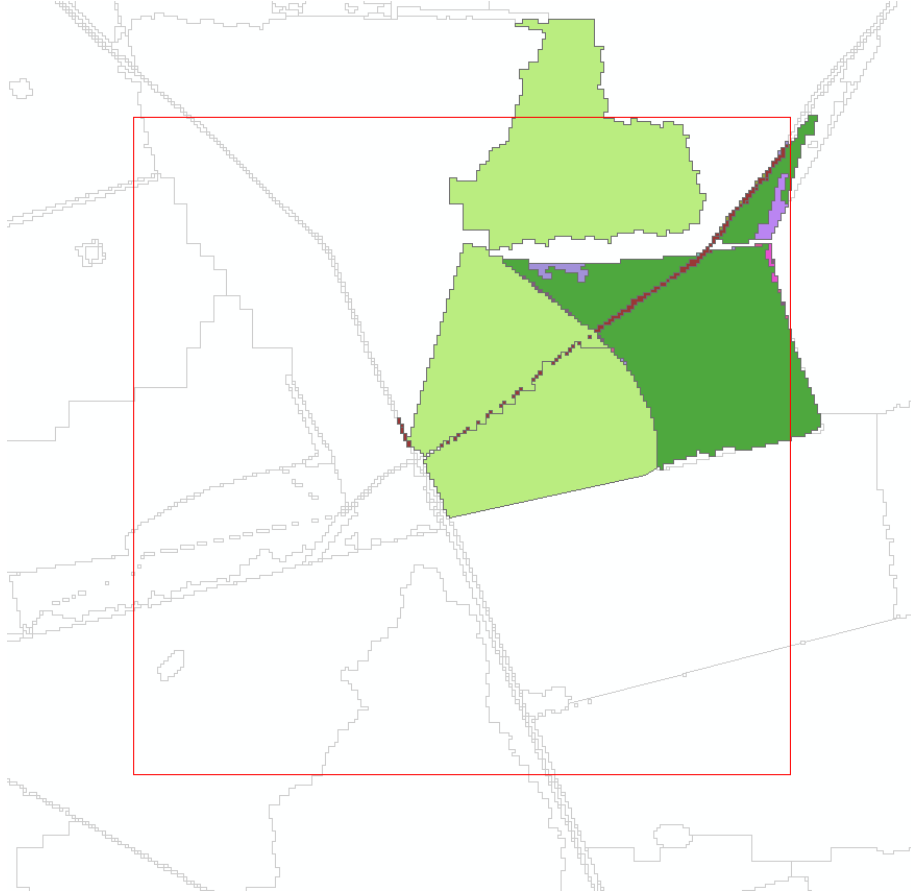
Number of parcels = 372



TF7439NE – Docking

Broad habitats = Arable fields, grassland, hedgerow, roads and copse

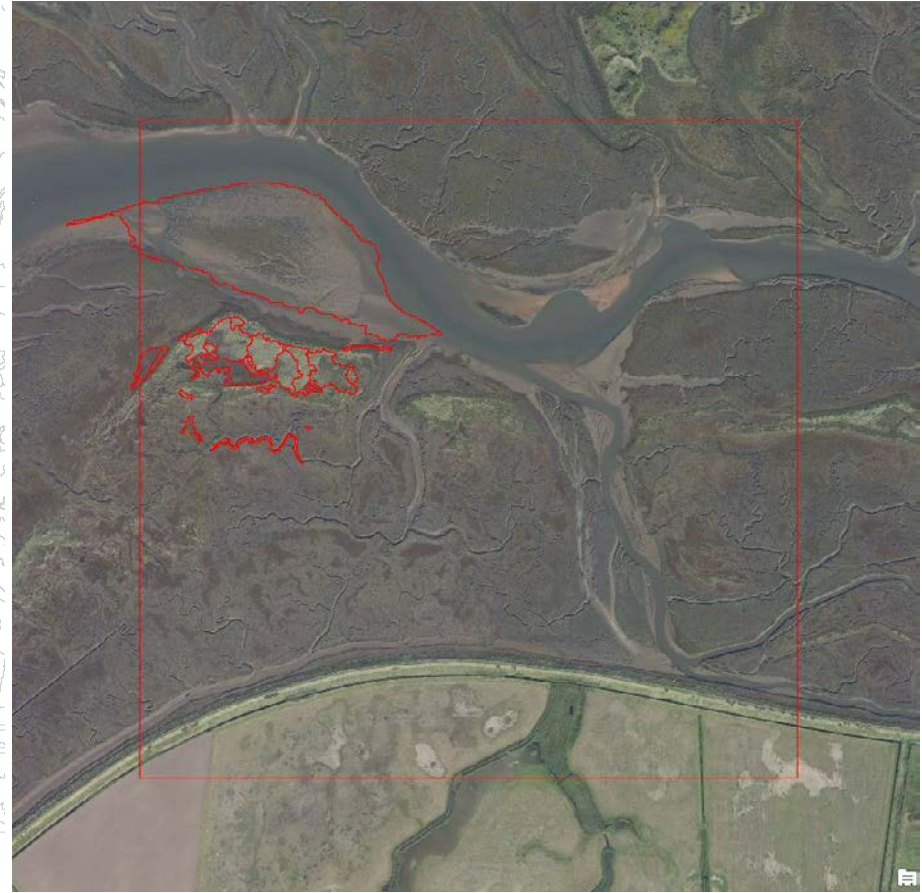
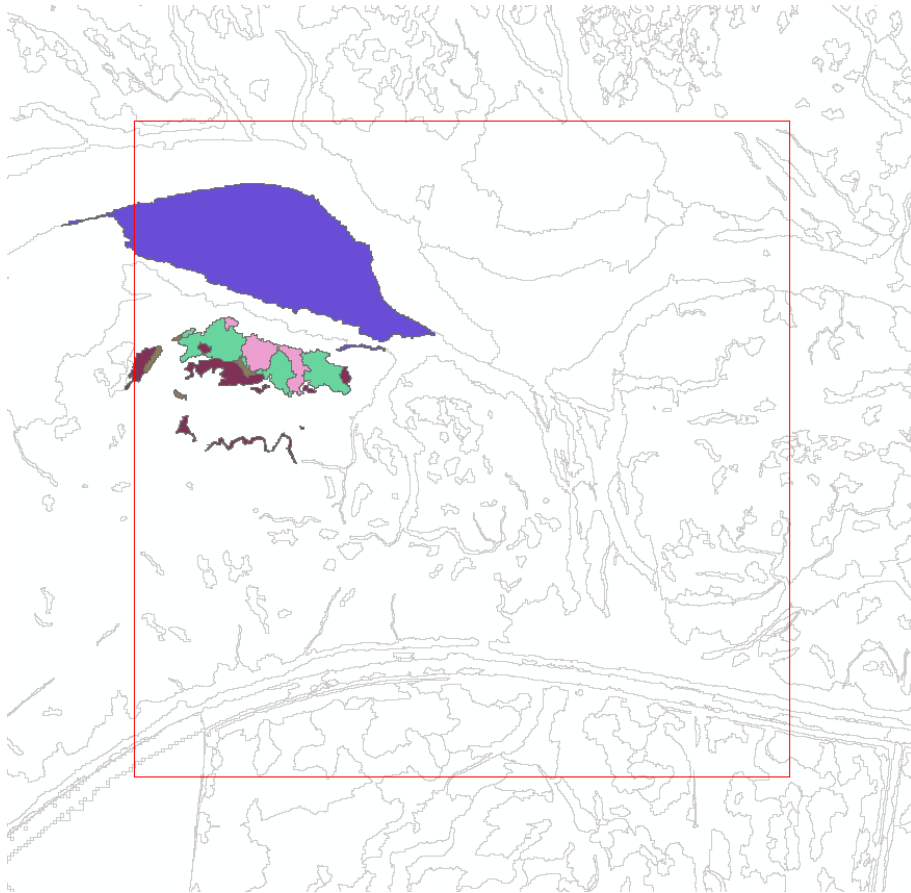
Number of parcels = 99



TF8145NW – Scolt Head

Broad habitats = Mudflats, saltmarsh, sand dunes, dune grassland

Number of parcels = 21



TG2309SE – Norwich

Broad habitats = Urban with green space and river

Number of parcels = 1332



TG2309SE – Norwich (Gardens removed)

Broad habitats = Urban with green space and river

Number of parcels = 842



TG2309SE – Norwich (Gardens and Urban removed)

Broad habitats = Urban with green space and river

Number of parcels = 32

